



Reduce Time to Market with PS-Team, Delcam's Latest Solution for Collaborative Manufacturing

Easily and simply manage the design review process in a secure web-based environment

Delcam has optimized the design process by speeding up the time it takes to get a product to market using its browser-based PS-Team solution, Delcam's latest addition to its CAD/CAM software line-up.

The PS-Team suite of modules enables task management and collaboration on 2D and 3D design drawings in a web-based environment. It allows a browser-based user access to find, view, measure, section and comment on drawings in a secure and easy to use environment.

Key Benefits

Real-time 24x7 design visibility – Eliminate time delays by accessing and collaborating on designs using the web-based document and task management repository.

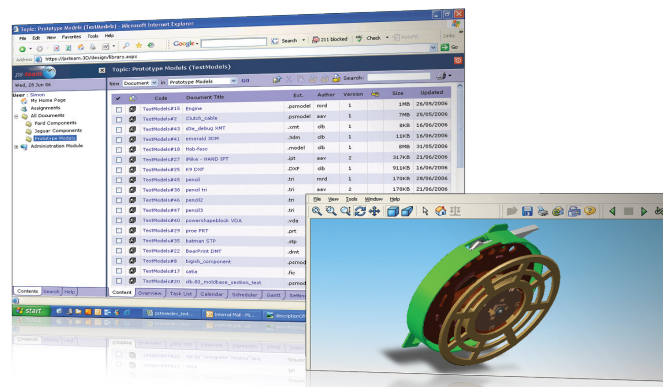
Reduced product development lifecycle – Streamlined approvals and revision processes ensure the final end product is agreed upon with minimal time delays.

Less errors made – All stakeholders access the latest designs ensuring the right drawing is reviewed, approved and manufactured.

Better quality – With all stakeholders having access to the design process and access to a rich knowledge base of historic design work, the finished product is more likely to be better designed, first time, with less chance of error.

Cost effective to deploy – PS-Team runs on a single web server based computer. On the client-side there is no software to deploy. This makes maintenance and routine upgrades painless. A working system can be operational in just a few days.

Integrated with Microsoft Office® – Project planners and managers who like to use Microsoft Office Project® and Excel® can take advantage of the installable plug-ins that come with PS-Team. Project plans can be synchronised and Excel® reports produced across PS-Team data from inside these applications.



Key Features

Document libraries – PS-Team provides a Windows Explorer® like interface but over the web with version control, audit trails of changes, comments and accompanying metadata.

CAD to PDF/eDrawings document conversion – Converts uploaded CAD formatted documents into an easy to use Browser-based viewing and markup solution for reviewers.

Project management – Jobs can be managed effectively using the Project Management module which can link with Microsoft Project® or Microsoft Excel®.

Task management – Tasks keep track of any activity whether design specific or just ad-hoc collaboration amongst the team. Tasks may be assigned to people or groups and audit trails are kept of all comments made, by whom and when.

Email alerts - Automatic notification via email of assignments, updates, reminders and approvals.

HTML-based Web forms - Custom forms may be created and branded to provide a business with the right look and feel for all stakeholders to update the system using structured and consistent processes.